



Community Health Needs Assessment

2022 Executive Summary



1) INTRODUCTION

Purpose of Report

This report provides an overview of findings from a community health needs assessment (CHNA) conducted on behalf of Logansport Memorial Hospital (LMH) in order to assess health needs in Cass County, Indiana. The assessment was initiated to identify the community's most important health issues in order to develop an effective implementation strategy to address such needs. LMH also assessed community health needs to respond to the regulatory requirements of the Patient Protection and Affordable Care Act of 2012 (PPACA) and IRS Notice 2011-52 as it pertains to section 501(r)(3) of the Internal Revenue Code, which requires that each tax-exempt hospital facility conduct an independent CHNA.

This report represents Logansport Memorial Hospital's efforts to share knowledge that can lead to improved health in Cass and surrounding counties. The completed CHNA will be the basis for creating an implementation strategy to address the identified community health needs.

Objectives

This Community Health Needs Assessment is a systematic, data-driven approach to determining the health status, behaviors, and needs of residents in Cass County. This information may be used to inform decisions and guide efforts to improve community health and wellness, thereby making the greatest possible impact on community health status.

The 2022 LMH Community Health Needs Assessment will be used as a tool to achieve four basic goals:

Identify the prioritized health needs within Cass County.

Compare 2019 baseline information about the health status of our community against new 2022 data.

Serve as the foundation for developing subsequent recommendations on implementation strategies that can be used by healthcare providers, community partners, and policymakers to improve the health status of the LMH community.

Provide public access to the CHNA results in order to inform the community of the overall health status and opportunities to transform the community's health status.

Background

Logansport Memorial Hospital is an eighty-three bed regional medical center serving Cass and surrounding counties. LMH provides a full complement of inpatient, diagnostic, surgical and therapy services. Logansport Memorial Hospital has an affiliated Physician Network that employs forty-one medical providers. In addition to the primary hospital location, the Hospital operates affiliated clinics in Cass, Carroll, Fulton, and Miami counties.

Mission Statement

“LMH serves as the region’s partner in both wellness and treatment.”

Vision

LMH will be the preferred choice of patients, employees, and providers in north central Indiana.

Values

Human Dignity

We will treat all people with courtesy, empathy, respect, and sensitivity.

Integrity

We will always demonstrate professionalism, ethics, and personal responsibility.

Justice

We will foster a caring environment that promotes fairness for the common good.

Service Excellence

We will use teamwork and innovation to exceed expectations.

Stewardship

We will allocate our human and financial resources wisely.



2) OUR COMMUNITY

Who We Serve

This section identifies the community assessed by Logansport Memorial Hospital. The primary service area of LMH is defined as Cass County. LMH serves a secondary market that includes Carroll, Fulton, Miami, Pulaski and White counties. Carroll County does not have a hospital and the remaining secondary counties are served by critical access hospitals.

Demographics

Population statistics can help generally explain changes in the community characteristics related to health status and play a major role in determining the specific services that a community needs. Logansport Memorial Hospital is located in Cass County, a county in north central Indiana. Cass County includes ZIP codes within the towns of Logansport, Walton, Galveston, Young America, New Waverly, Twelve Mile, Royal Center, Lucerne, and Lake Cicott.

Based on the most recent Census Bureau, Cass County's population is 37,563. Ninety-two percent of the population is white and the Hispanic population is approximately 17.4% or 6527 residents. Between the 2010 and 2020 US Censuses, the population of Cass County decreased by 1,407 persons, or 3.7%. This is contrary to the state and nation which experienced increases in population during this time.

In Cass County, 22.7% of the population are infants, children or adolescents (ages 0-17); another 58.6% are age 18-64; while 18.6% are age 65 and older. Cass County is aging faster than the rest of the state. The median age is 40.6 years, compared to the state average of 37.8 years.

Cass County has a relatively low level of educational attainment as compared to the state. Among the Cass County population age 25 and older, an estimated 14.8% do not have a high school diploma. In 2020, only 13.0% had a bachelor's degree or higher compared to 32.9% for the state of Indiana.

Economic Indicators

In 2021, the average share of jobs in Cass County was the highest within the areas of manufacturing, federal, state and local government, healthcare, retail and food service. Twenty-four establishments reported 100+ plus employees, while nearly 500 establishments employed less than ten employees. The largest employers in Cass County include Tyson Fresh Meats, Logansport Memorial Hospital, Logansport Community School Corporation, Logansport State Hospital, MPI, Kauffman Engineering, Inc., A Raymond Tinnerman, and Matthew Warren.

Unemployment in Cass County has trended downward. Local rates are similar to the statewide and national unemployment rates.

September 2022 Unemployment Rate	Rate	Previous Month	Previous Year
Cass County, IN	2.4	3.5	3.5
State of Indiana	2.2	2.6	4.0
United States	3.5	3.7	4.8

Source: Indiana Department of Workforce Development

Household Income and People in Poverty


Areas with high poverty rates tend to have poorer access to healthcare, lower rates of preventative care, higher rates of preventable hospital admissions, and poorer health outcomes in general. According to the latest US Census estimate, the national poverty rate was 11.6% and the Indiana poverty rate stood at 11.6%. During the same period of time, the Cass County poverty rate was 10.7%. Healthy People 2030 has recommended a reduction on the proportion of persons living in poverty to 8%.



Income level is an additional economic factor that has been associated with the health status of a population. Based on the US Census data, Cass County’s per capita personal income was \$25,184, with a median household income of 49,020, which are both below the state rate. Indiana had a per capita personal income of \$30,683 and a median income of \$58,235 in 2020. The US per capita personal income was \$35,384 and the median income was \$64,994 during the same period.

Household Income Levels	Per Capita Income	Median Income
Cass County, IN	\$25,184	\$49,020
State of Indiana	\$30,683	\$58,235
United States	\$35,384	\$64,994

Source: www.census.gov/quickfacts, American Fact Finder, IBRC



Other areas of concern identified in the phone surveys were related to housing insecurity and food insecurity. Compared to US prevalence, the Cass County proportion of adults who worried about paying for rent or mortgage in the past year was 25.6%. Adults more likely to report housing insecurity include women, adults under age 65 and residents living with lower incomes.

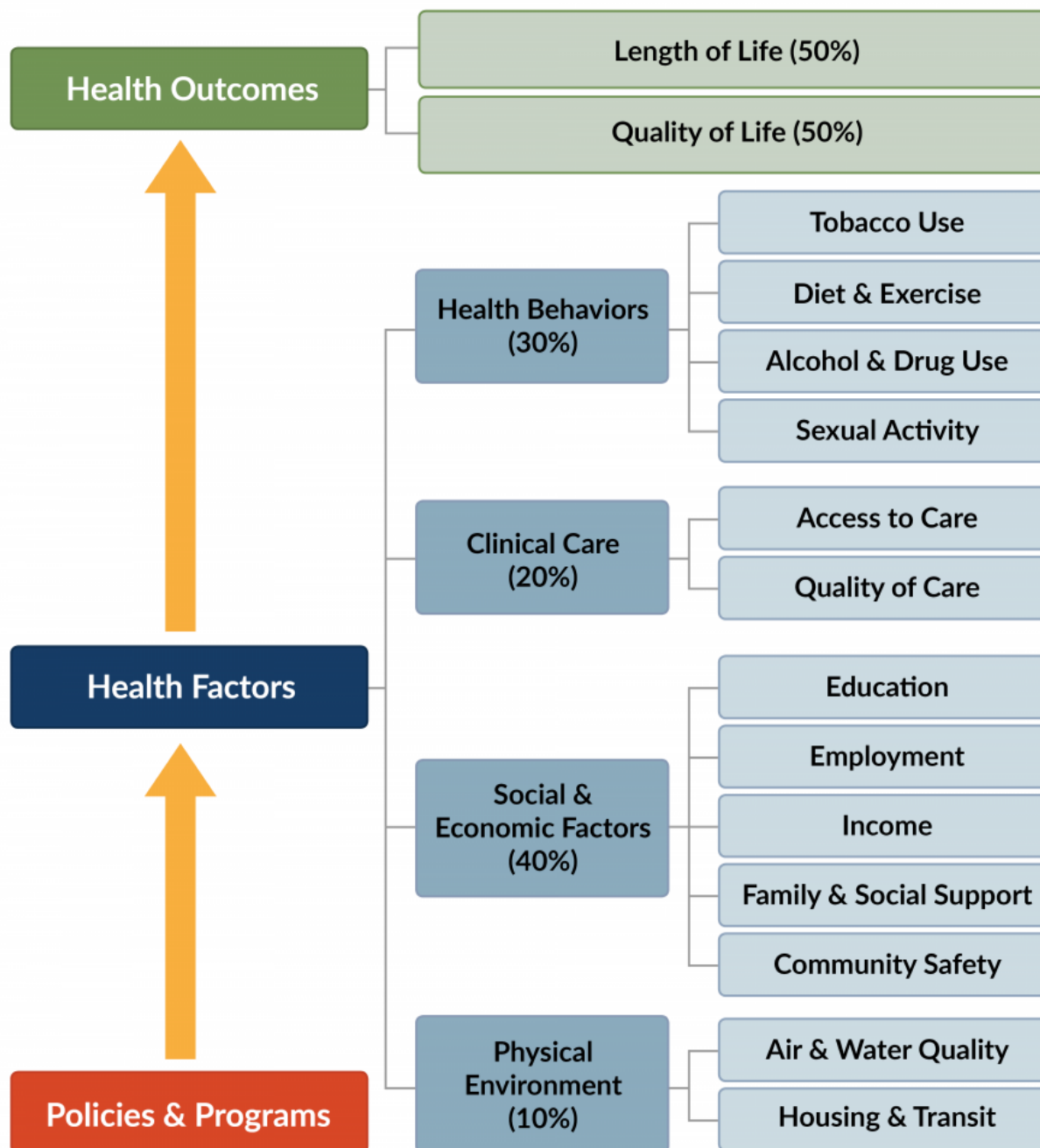
Additionally, 15.1% of Cass County adults reported they often or sometimes worried about whether food would run out before they had money to buy more. Another 12.9% report a time in the past year when the food they bought just did not last, and they did not have money to get more. Overall, 17.3% of community residents are found to be food insecure.

Insurance Coverage

National statistics on health insurance indicate that 13.7% of the United States population is uninsured. In Cass County, among adults age 18 to 64, 10.3% report having no insurance coverage for healthcare expenses. This is better than the state finding and similar to the national finding. Of those reporting, 55% have employer-based insurance; 15.9% have Medicaid and 6.4% have Medicare. The remainder of those insured are covered by self-purchase, VA/Military, or other government coverage.

County Health Rankings

The Robert Wood Johnson Foundation, along with the University of Wisconsin Population Health Institute (PHI), created County Health Rankings to assess the relative health of county residents for all 50 states. The data is aggregated into health outcomes and health factors. The PHI separates health outcomes into mortality (length of life) and morbidity (quality of life). Health factors are separated into four factors that largely influence the health outcomes: physical environment, society and economics, clinical care and health behaviors as depicted in the following diagram.



County Health Rankings model © 2014 UWPHI

In Indiana, counties are ranked from 1 to 92, where 1 represents the highest ranking and 92 represent the lowest. In 2022, Cass County’s health factors ranked 62 out of 92. In the same year, Cass County’s health outcomes ranked 67 out of 92. The overall health rank has remained consistent; however health outcomes declined from the last reporting in 2019.

The model assumes that the status of a county’s health status directly affects the status of its health outcomes. The health outcomes are then indicative of a county’s observable health behaviors. From the data collected and incorporated into the model, the health of Cass County residents is worse than state and national benchmarks.

Following are the 2022 Cass County results.

2022 Cass County Health Rankings			
Indicator	Cass County	State of Indiana	Benchmark
Overall Health Outcome	67		
Mortality (Length of Life)	75		
Overall Health Factors	62		
Health Behaviors			
<i>Tobacco Use</i>	23%	20%	15%
<i>Physical Inactivity</i>	36%	31%	23%
<i>Alcohol Use</i>	16%	18%	15%
Clinical Care			
<i>Access to Care/Uninsured</i>	14%	10%	6%
<i>Preventable Hospital Stays</i>	3869	4388	2233
Social and Economic Factors			
<i>Education—High School Graduation</i>	85%	89%	94%
<i>Unemployment</i>	2.4%	2.2%	
<i>Children in Poverty</i>	15%	15%	9%
<i>Children in Single Parent Households</i>	26%	25%	14%
Physical Environment			
<i>Severe Housing Problems</i>	12%	13%	9%

Source: County Health Rankings Report, 2022

3) COMMUNITY HEALTH NEEDS METHODOLOGY

Collaboration

The Community Health Needs Assessment was sponsored by Logansport Memorial Hospital. Community partners were invited to participate in the process.

Name	Affiliation
Chuck LaDow	Area Five Agency on Aging
Steve Gwin	Area Five Agency on Aging
Delli Wells	Cass County DCS
Derreck Parkevich	Cass County Family YMCA
Michelle Dials	Cass County Communication Network
Jeremy Hall	Cass County Government
Serenity Alter	Cass County Health Department
Ed Schroder	Cass County Sheriff
Amy Beechy	Project Matters
Andrea Foreman	Senior Helpers
Bill Cuppy	Logansport-Cass County Chamber of Commerce
Christy Householder	Cass County Economic Development
Rocky Buffum	Cass County EMA
Deanna Crispen	Cass County Community Foundation
Arin Shaver	Cass-Logansport Planning Department
Paul Voight	Caston School Corporation
Lacey Schurnpel	Chase Center
Rick Bair	City of Logansport, Logansport Fire Department
Dave Morris	City of Logansport
Chris Martin	City of Logansport
Jacob Pomasl	City of Logansport
Janet Fawley	City of Logansport, Parks Department
Travis Yike	City of Logansport, Logansport Police Department
Jason Mitchell	Emmaus Mission Center
Nicole Hiatt-Drang	Four County Counseling Center
Jae Miller	Four County Counseling Center
Carrie Cadwell	Four County Counseling Center

Collaboration

Participants continued.

Name	Affiliation
Maria Rogers	Guardian Angel Hospice
Luje Wortley	Indiana Health Centers
Ethan Manning	Indiana State Representative
Stacey Donato	Indiana State Senator
Ethan Heicher	Ivy Tech Community College
Jovita Flores	Ivy Tech Community College
Stormy Fiscel	Head Start
Elisa Banuelos-Cortes	Logansport Community School Corporation
Michele Starkey	Logansport Community School Corporation
Matt Jones	Logansport Community School Corporation
Rachel Theodore	Logansport Memorial Hospital
Carmen Jones	Logansport Memorial Hospital
Kim Flora	Logansport Memorial Hospital
Craig Pawlowski, MD	Logansport Memorial Hospital
Emilee Albright	Logansport Memorial Hospital
Jade Herr	Logansport Memorial Hospital
Leanne Schaller	Logansport Memorial Hospital
Lynda Shrock	Logansport Memorial Hospital
Perry Gay	Logansport Memorial Hospital
Tara McVay	Logansport Memorial Hospital
Vicki Byrd	Logansport Memorial Hospital
Kaitlyn Shidler	Logansport Memorial Hospital
Megan Horton	Logansport Memorial Hospital
Christine D'Andrea	Logansport Memorial Hospital
Mandy Michael	Logansport Memorial Hospital
Leslie Grigsby	Logansport Memorial Hospital
Kellee Howard	Logansport Memorial Hospital
Erica Heater	Logansport Memorial Hospital

Collaboration

Participants continued.

Name	Affiliation
Vonda Hand	Miller's Merry Manor
Janiece Stover	North Central Indiana Area Health Education Center
Chuck Grable	Pioneer School Corporation
Bethany Schoenrad	Logansport State Hospital
Jane Horner	Purdue Extension
Kathy Dunderman	MPI
Zach Szmara	The Bridge
Michele Balderas	Tyson Foods
Stephanie Helton	Tyson Foods
Tim Garland	Southeastern School Corporation
Chris Armstrong	United Way of Cass County
Karli Armstrong	United Way of Cass County
Cortney Hanson	Woodbridge Health Campus
Nikki Malott	Youth Services Alliance
Chris Nabors	Peak Community Services
Kirsten Adair	Pharos Tribune
Jon Myckle Price	Security Federal Savings Bank
Matt Lewellen	Steinberger Construction
Aime Shante	Community Doula
Sylvia Saxena	I-HOPE, Purdue University
Beth Elmore	I-HOPE, Purdue University

Timeline

A detailed timeline for the Community Health Needs Assessment process was developed to ensure that the project stayed focused. The following timeline outlines pertinent milestones and dates.

Appoint CHNA Taskforce	March 2022
Phone Surveys	April—June 2022
Secondary Data Collection	April—June 2022
Online Key Informant Survey	April—June 2022
Community Health Needs Assessment Report Presentation	August 30, 2022
CHNA Taskforce Meeting	September 28, 2022
<input type="checkbox"/> Identify Priorities	
CHNA Taskforce Meeting	September 28, 2022
<input type="checkbox"/> Finalize/Approve Priorities	
<input type="checkbox"/> Identify Resources to Address Priorities	
<input type="checkbox"/> Finalize Implementation Strategies to Address Priorities	
Develop CHNA Report/Executive Summary	November 2022
Taskforce Review CHNA Report via email	November 11, 2022
CHNA Presented to BOT	November 28, 2022
Press Release (Public and Internal)	November 29, 2022
CHNA Posted to Website	November 28, 2022
CHNA Presented to Leadership Team	November 29, 2022
Annual Update (Form 990)	2023
Annual Update	2024
CHNA Process Begin	2025

CHNA Methodology

This Community Health Needs Assessment is a systematic, data-driven approach for determining the health status, behaviors, and needs of the residents in Cass County, Indiana. Subsequently, the data may be used to inform decisions and guide efforts to improve community health and wellness. Information provided from the CHNA helps communities identify the issues of greatest concern and decide where and how to commit resources to those areas. Utilizing this data driven approach will lead to measured improvement and thus make the greatest possible impact on community health status.

This assessment was conducted by Professional Research Consultants, Inc. (PRC). PRC is a nationally-recognized health care consulting firm with extensive experience conducting Community Health Needs Assessments such as this in hundreds of communities across the United States since 1994.

This assessment incorporates both qualitative and quantitative sources. Qualitative data input includes primary research (the PRC Community Health Survey) and secondary research (vital statistics and other existing health-related data); these quantitative components allow for trending and comparison to benchmark against data at the state and national levels. Qualitative data input included primary research through a Key Informant Focus Group.



Community Health Survey

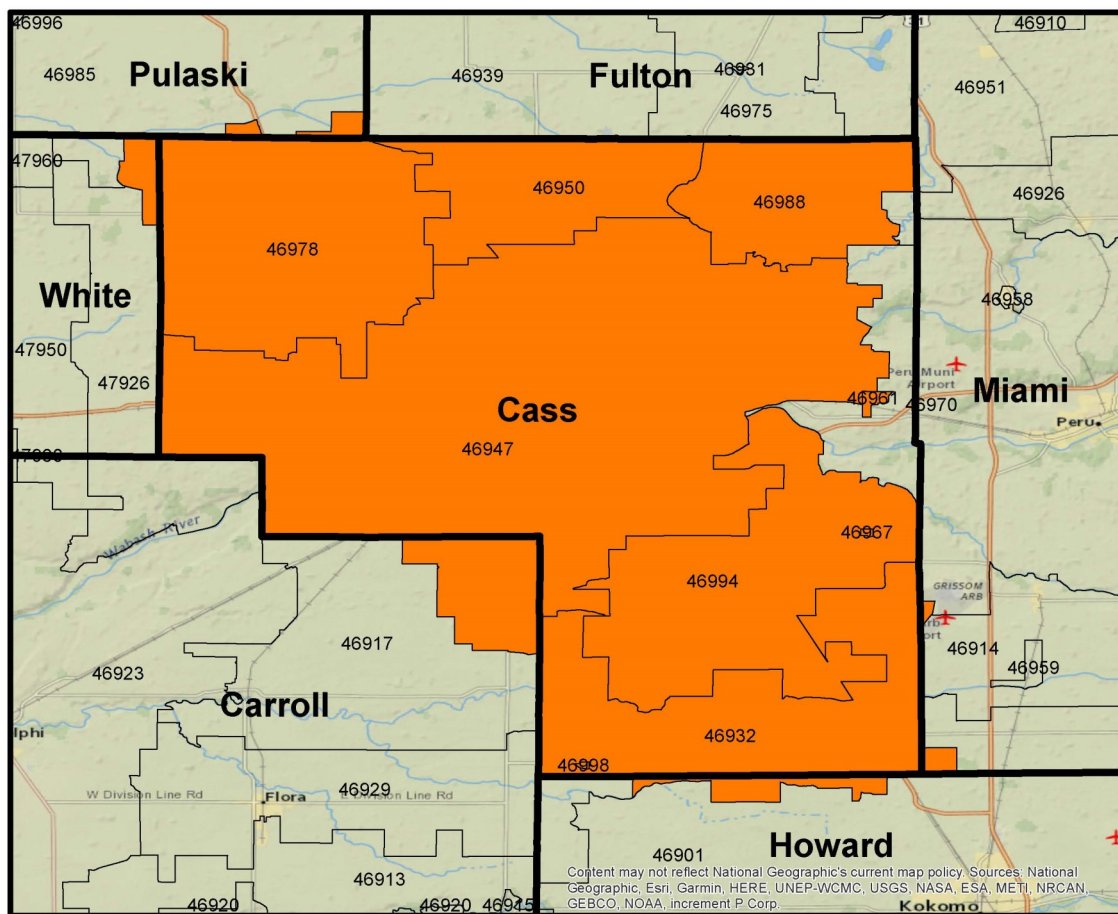
The survey instrument used for this study is based largely on the Centers for Disease Control and Prevention (CDC) Behavioral Risk Factor Surveillance System (BRFSS), as well as various public health surveys and customized questions addressing gaps in indicator data relative to health promotion, disease prevention, and other recognized health issues. The final survey instrument was developed by the Logansport Memorial Hospital Community Health Needs Assessment taskforce and Professional Research Consultants, Inc.

A precise and carefully executed methodology is critical in asserting the validity of the results gathered in the PRC Community Health Survey. To ensure the best representation of the population surveyed, a telephone interview methodology incorporating both landline and cell phone interviews was employed. The primary advantages of telephone interviewing are timeliness, efficiency and random-selection capabilities.

The sample design used for this effort consisted of a random sample of 500 individuals age 18 and older in Cass County, Indiana. All administration of the surveys, data collection and data analysis was conducted by Professional Research Consultants, Inc. (PRC). For statistical purposes, the maximum rate of error associated with a sample size of 500 is $\pm 4.4\%$ at the 95 percent confidence level. This minimal level of error ensures greater accuracy of the data collected and analyzed for results provided. The survey consisted of over 125 survey items.

The sample design and the quality control procedures used in the data collection ensure the sample is representative. Thus, the findings can be generalized to the total population of the community members in the defined area with a high degree of confidence. The chart below displays the population and sample characteristics of surveyed individuals.

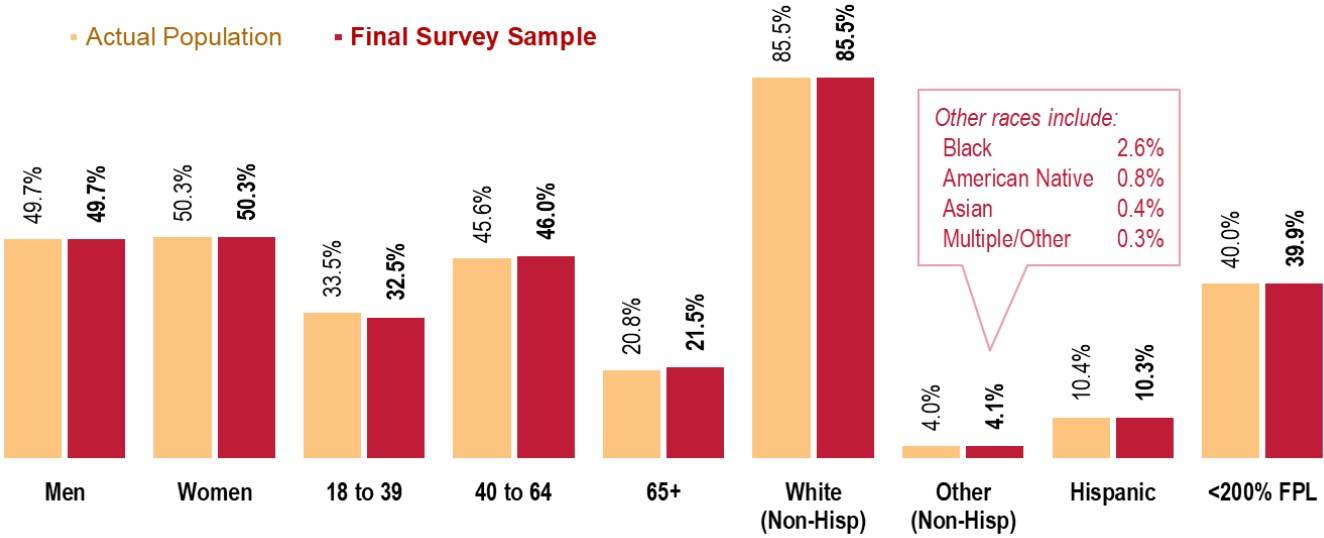
Population and Sample Characteristics for Cass County, 2019



Population and Sample Characteristics for Cass County, 2022

Population & Survey Sample Characteristics
(Cass County, 2022)

Actual Population Final Survey Sample



Public Health, Vital Statistics, and Other Data

A variety of existing secondary data sources was consulted to complement the research quality of this Community Health Needs Assessment. The secondary data were collected by PRC. County level data was analyzed, as well as census data, vital statistics and other health-related data. The following reports and tools were used to benchmark the data:

- Previous Survey Data
- PRC National Health Survey
- Indiana BRFSS Data
- Healthy People 2030 Targets
- National Vital Statistics

Community Stakeholder Input

As part of the community health assessment, online key informant surveys were conducted. There were 90 community stakeholders that participated in the online survey. The participants represented a variety of sectors – physicians, public health, other health providers, social services and community leaders.

Potential participants were chosen because of their ability to identify primary concerns of the populations with who they work, as well as of the community overall. These organizational representatives work with low-income, minority (including African American, Hispanic, Burmese and Asian residents), or other medically underserved populations.

Information Gaps

While this assessment is quite comprehensive, it cannot measure all possible aspects of health in the community, nor can it adequately represent all possible populations of interest. It must be recognized that these information gaps might in some ways limit the ability to assess all of the community's health needs.

For example, certain population groups such as the homeless, institutionalized persons, or those who only speak a language other than English or Spanish are not represented in the survey data. Other population groups for example, pregnant women, lesbian/gay/bisexual/transgender residents, undocumented residents, and members of certain racial/ethnic or immigrant groups might not be identifiable or might not be represented in numbers sufficient for independent analyses.

In terms of content, this assessment was designed to provide a comprehensive and broad picture of the health of the overall community. However, there are certainly a great number of medical conditions that are not specifically addressed.

Vulnerable Populations

The Community Health Needs Assessment analysis and report yielded a wealth of information about the health status, behaviors and needs of our population. A distinct advantage of the primary quantitative (survey) research is the ability to segment findings by geographic, demographic and health characteristics to identify the primary and chronic disease needs and other health issues of vulnerable populations, such as uninsured persons, low-income persons, and racial/ethnic minority groups.

For additional statistics about uninsured, low-income, and minority health needs, please refer to the complete Community Health Needs Assessment report, which can be viewed online at <https://www.logansportmemorial.org/community-health-needs-assessment>.

Prioritization Process

The Community Health Needs Assessment process began in February 2022, with the selection of the taskforce. Several meetings were conducted to prepare for the process.


Following a detailed presentation from Professional Research Consultants, Inc. on August 30, 2022, 13 areas of opportunity were identified. The following chart identifies the Areas of Opportunity as reported in the Community Health Needs Assessment report.

The taskforce then met to rank the 13 identified areas of opportunities against established criteria:

Scope and Severity – The first rating was to gauge the magnitude of the problem in consideration of the following:

- How many people are affected?
- How does the local community compare to state or national levels, or Healthy People 2030 targets?
- To what degree does each health issue lead to death or disability, impair quality of life, or impact other health issues?
- Ratings were on a scale of 1 (not very prevalent at all) to 10 (extremely prevalent).

Ability to Impact – A second rating was designed to measure the perceived likelihood of the hospital having a positive impact on each health issue, given available resources, competencies, spheres of influence, etc. Ratings were entered on a scale of 1 (no ability to impact) to 10 (great ability to impact).



Individuals' ratings for each criteria were averaged for each tested health issue, and then these composite criteria were averaged to produce an overall score. This process yielded the following prioritized list of community health needs:

1. Mental Health
2. Access to Health Care Services
3. Substance Abuse
4. Infant Health & Family Planning
5. Nutrition, Physical Activity, and Weight
6. Diabetes
7. Heart Disease and Stroke
8. Cancer
9. Tobacco Use
10. Respiratory Diseases
11. Injury and Violence
12. Potentially Disabling Conditions
13. Kidney Disease

Prioritization Results

Logansport Memorial Hospital and the Community Health Needs Assessment taskforce chose these five priorities to include the Implementation Plan:

- 1) Mental Health
- 2) Nutrition, Physical Activity, and Weight
- 3) Substance Abuse
- 4) Access to Health Care Services
- 5) Infant Health and Mortality

Areas of Opportunity

Mental Health	Fair/Poor Mental Health Diagnosed Depression Symptoms of Chronic Depression Receiving Treatment for Mental Health Stress Suicide Deaths
Access to Healthcare	Barriers to Access—Inconvenient Hours and Lack of Transportation Primary Care Physician Ratio Specific Source of Ongoing Medical Care Emergency Room Utilization
Substance Abuse	Illicit Drug use Personally impacted by substance abuse (self or others)
Infant Health and Family Planning	Infant Deaths
Nutrition, Physical Activity and Weight	Fruit/Vegetable Consumption Food Insecurity Overweight and Obesity (Adults) Access to Recreation/Fitness Facilities
Diabetes	Diabetes Death Diabetes Prevalence
Heart Disease and Stroke	Leading Cause of Death High Blood Pressure Prevalence
Cancer	Leading Cause of Death Colorectal Cancer Deaths Cancer Incidence—including Lung and Colorectal Cancer Cervical Cancer Screening (age 21-65)
Tobacco Use	Cigarette Smoking Prevalence Environment Tobacco Smoke Exposure at Home—including Among Households with Children
Respiratory Diseases	Chronic Lower Respiratory Disease (CLRD) Deaths Chronic Obstructive Pulmonary Disease (COPD) Prevalence Flu Vaccination (age 65+)
Injury and Violence	Unintentional Injury Deaths—including Motor Vehicle Crashes Firearm-Related Deaths
Potentially Disabling Conditions	Alzheimer's Deaths Caregiving
Kidney Disease	Kidney Disease Prevalence

4) IMPLEMENTATION STRATEGY

Based on the health needs priorities identified earlier in this document, the full implementation plan outlines the activities currently underway or planned to meet community health needs. It also includes collaborations with other community, governmental, civic, and faith-based groups, and the intended impacts of addressing these priorities. A snapshot below highlights the objectives and goals directing the efforts and activities defined within the full implementation plan.

Mental Health	Nutrition, Physical Activity, and Weight	Substance Abuse	Access to Health Care Services	Infant Health and Family Planning
<p>OBJECTIVE To promote mental, emotional, and behavioral well-being.</p>	<p>OBJECTIVE To empower and engage participants in living healthy lifestyles, using education to demonstrate how those choices and behaviors lead to an improved quality of life.</p>	<p>OBJECTIVE To reduce the incidence of illicit drug use.</p>	<p>OBJECTIVE To increase access to health care services.</p>	<p>OBJECTIVE To empower and engage participants in living healthy lifestyles, using education to demonstrate how those choices lead to an improved quality of life.</p>
<p>GOAL Strengthen partnerships to deliver mental health and substance use services more effectively in the community.</p>	<p>GOAL Provide and support inclusive, accessible, and diverse health and wellness opportunities.</p>	<p>GOAL Provide opportunity for early intervention services for individuals with substance use disorders.</p>	<p>GOAL Provide increased and varied access to healthcare services that are designed to meet the needs of the community served by LMH.</p>	<p>GOAL Reduce the rates for fetal infant mortality (>than 20 weeks) and child mortality (under 18 years) in Cass County.</p>

The full implementation plan is a separate document and can be found on the LMH website: <https://www.logansportmemorial.org/community-health-needs-assessment>

Community-wide Community Benefit Planning

The community is fortunate to be able to collaborate and openly communicate with schools, non-profit organizations, government agencies and healthcare facilities. The Cass County Resource Network (CCRN) meets monthly to address community social service needs. In addition to the CCRN, there are several organizations working on these key issues identified in the 2019 CHNA. As the taskforces and individual organizations begin to analyze the information from the 2019 Community Health Needs Assessment, it is the hope and intention of Logansport Memorial Hospital that this will foster a greater desire to embark on a community-wide community health improvement planning process.

Summary

The written implementation plan will be monitored over the next three years for changes and modifications. As such, this plan is considered an evolving document, not a static “snapshot.” As new strategies for success are developed, the implementation plan will be changed. In this way, Cass County will realize its goals of increased access, reduced costs, and improved quality of care to secure a healthier future for the residents of this community.

Public Dissemination

This Community Health Needs Assessment is available to the public using the Logansport Memorial Hospital website: <https://www.LogansportMemorial.org/Community>.

